

The Village Collection is a classic series of homes by Nationwide Homes. Inspired by families and neighborhoods across the country, the series echoes a simpler time yet offers all the convenience, comfort and technological advances found in all of our homes. For more information about the Village Collection, or any other Nationwide home, please contact your local authorized builder.



## The Chatham

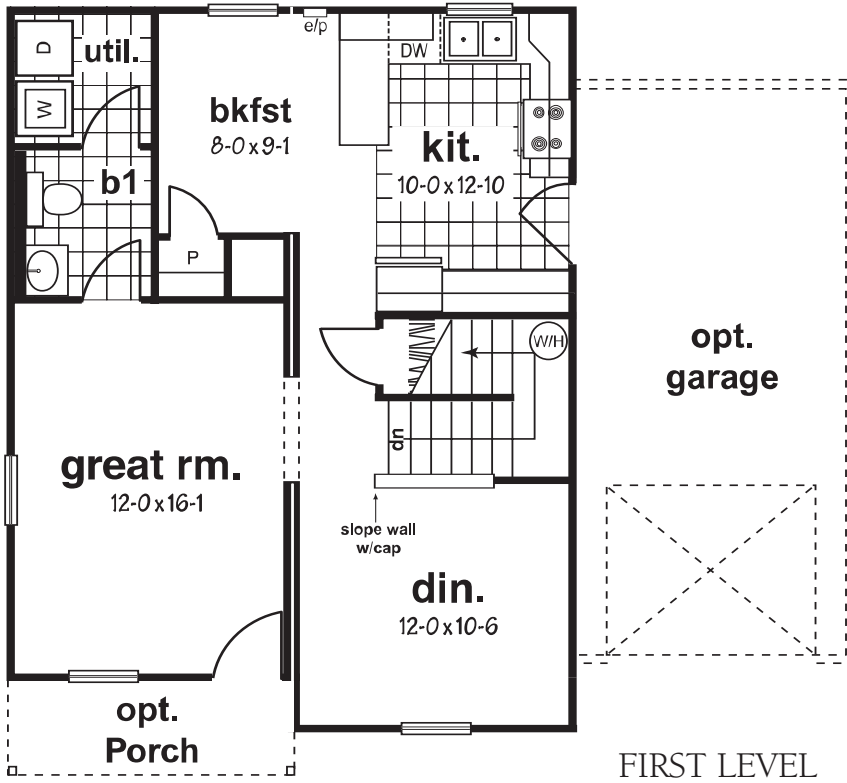
The Chatham's two-story design efficiently makes use of every bit of its space to provide for family friendly living. At home in either the city or the suburbs the Chatham is especially well suited to smaller and more narrow lots.

- 1,392 square feet
- Dimensional area 30-0 x 24-0
- Three bedrooms, two-and-a-half baths
- Formal dining and breakfast nook

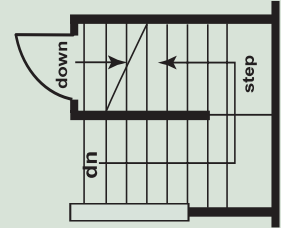
THESE ARE ARTIST RENDERINGS FOR SALES PURPOSES ONLY.  
REFER TO WORKING DRAWINGS FOR ACTUAL DIMENSIONS.

The  
Village  
Collection

# The Village Collection

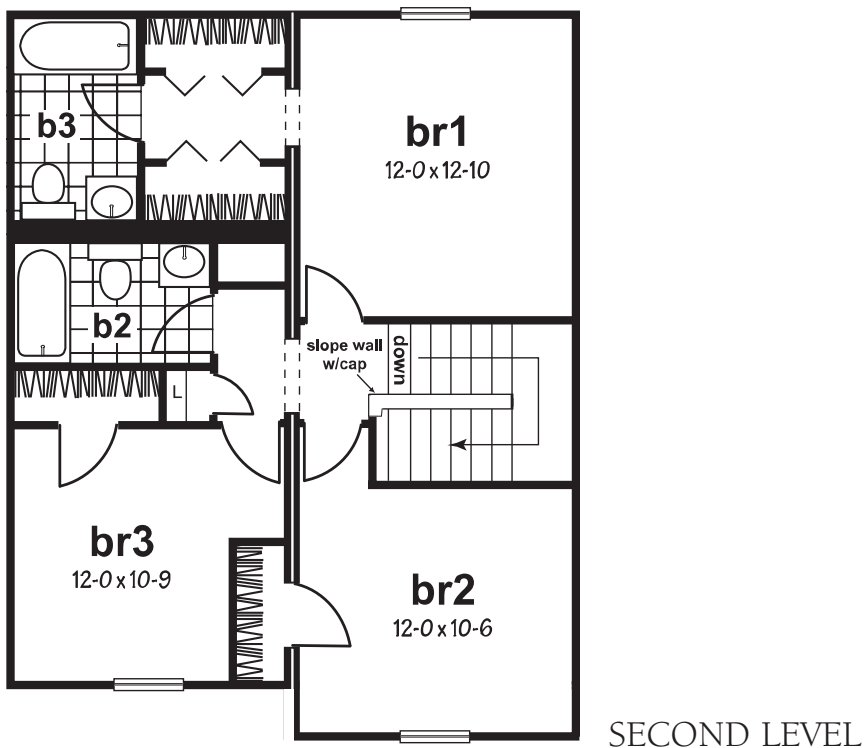


## Alternate Plans



Opt.  
Basement Plan

# The CHATHAM



PO. Box 5511  
1100 Rives Road  
Martinsville, VA 24115  
P: 276-632-7100  
F: 276-666-2537  
[www.nationwidecustomhomes.com](http://www.nationwidecustomhomes.com)